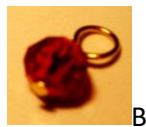




12. Wreath with Holly

Materials Required

- 2 x ER299/25 hoops
- 4 x 3/4" head pins
- 4 x 6mm Chinese Crystals Ruby Rondelle
- 30 x 6mm Chinese Crystals Green Rondelle
- 1 PR Earring wires



B



A

- Thread 15 green rondels onto the hoop.
- Close the hoop and crimp shut. Do this firmly so that the wire will not open up again (A).
- On a 3/4" head pin put on 1 red rondell, turn a circle close to the bead (B). Repeat.
- Attach the holly to the inside ring of the earring hoop as per the picture above.
- Attach the earring wire to the outside ring as per the picture above, making sure the front is facing the opposite direction to the earring wire.

How to turn a circle:

1. Bend the wire at a right angle away from you as close to the bead as possible using the tip of the round nose pliers. Clip wire 1.5cm from the turn.
2. Grip the very tip of the wire in your round nose pliers about halfway up the plies. (The diameter of the pliers where you grip determines the circle's size e.g. if you want a small circle grip with tip of the pliers, medium circle grip the pliers in the middle.)
3. Press downwards slightly and rotate the wire into a circle.
4. Let go, grasp the circle at the same place on the pliers and keep turning to close the circle. You can turn this circle again to make a double more secure circle.



1



2



3



4